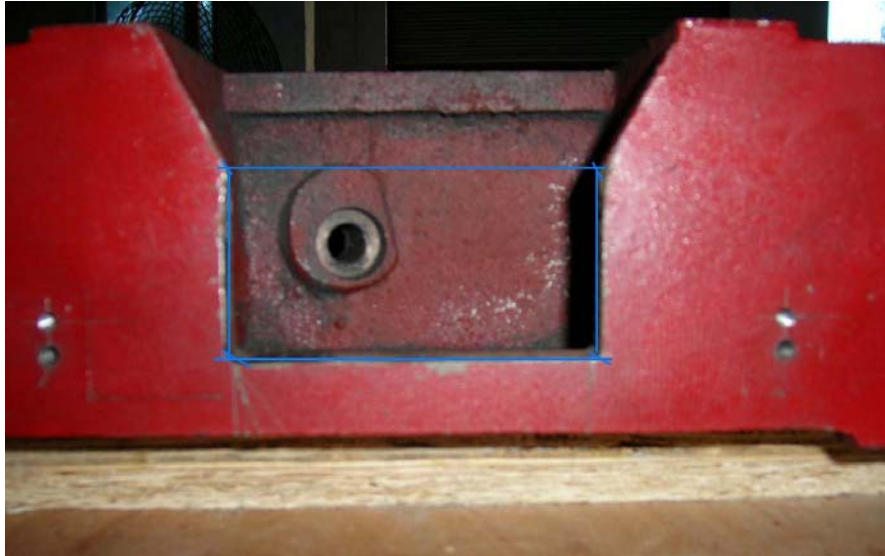


# Syil Super cnc X3 Instruction manual

Please tear down every parts before you install it .and array every parts for convenience installation. And prepare some tool. Later let us install a sieg supper cnc X3.

First step:



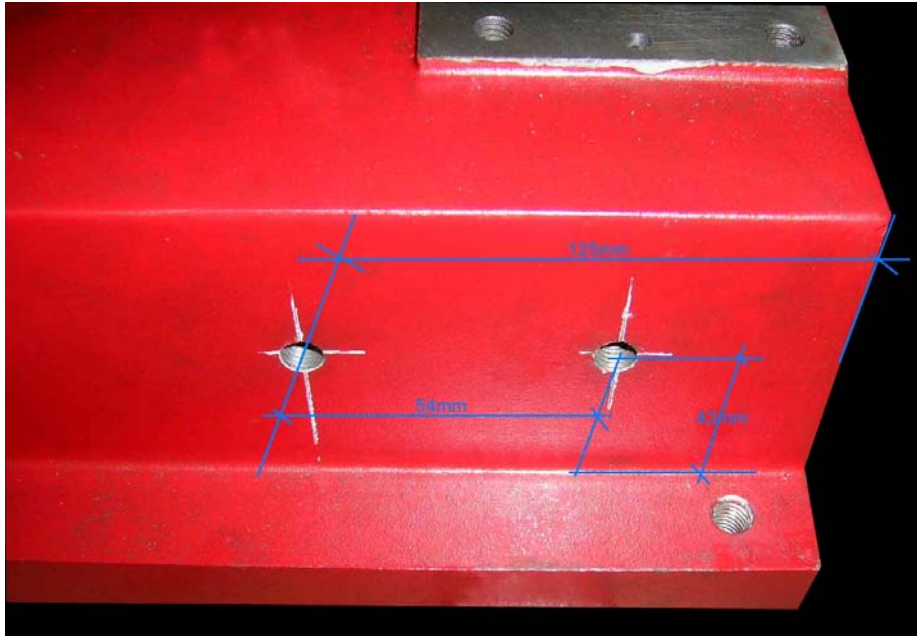
Please cut a area for install Z axis stepper motor.. the length is 100mm..please use some tool to cut the area. and please notice: keep surface of incision as clean as a whistle..

Secondly step:



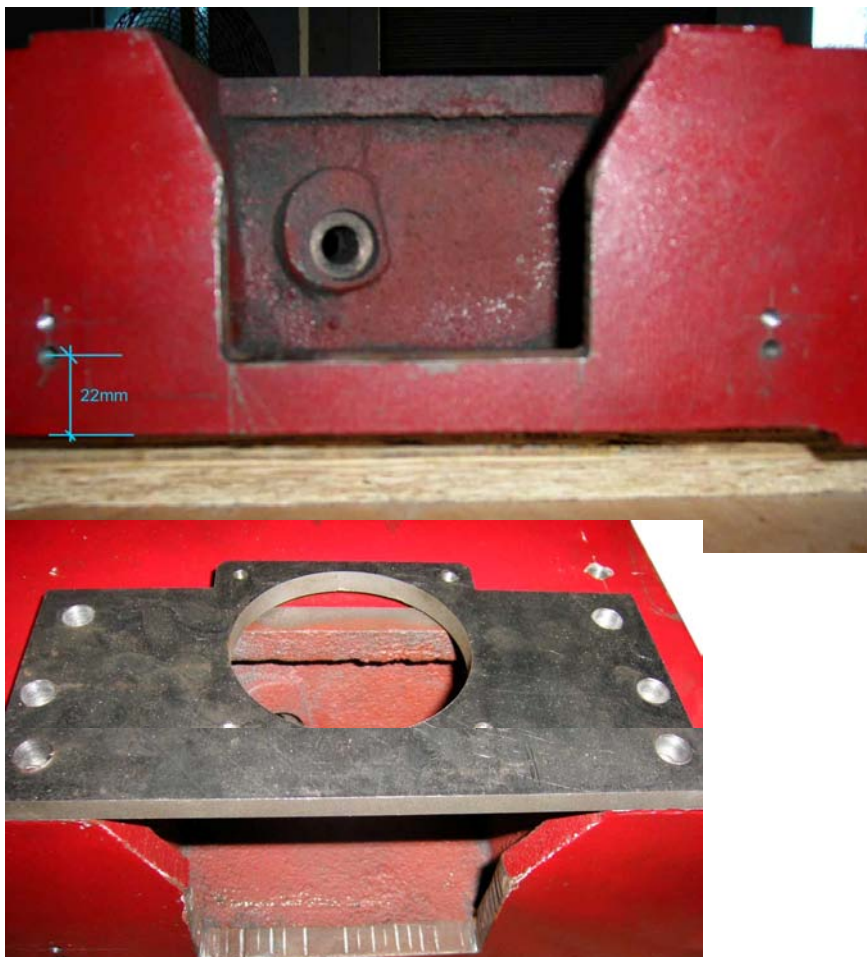
Please confirm a hole for installing gas springs. And the detailed place of hole that you can confirm it yourselves.. when you install and adjust gas springs.(our position:125mm/25mm)

Third step:



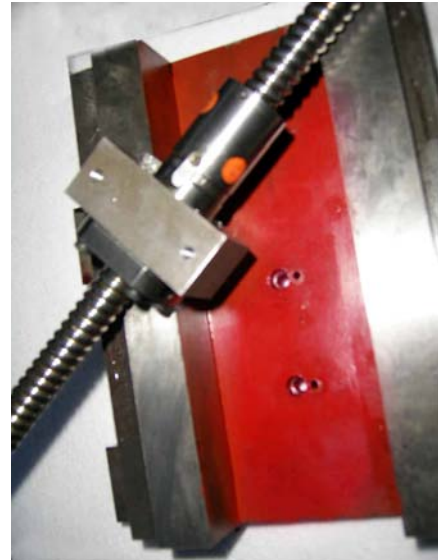
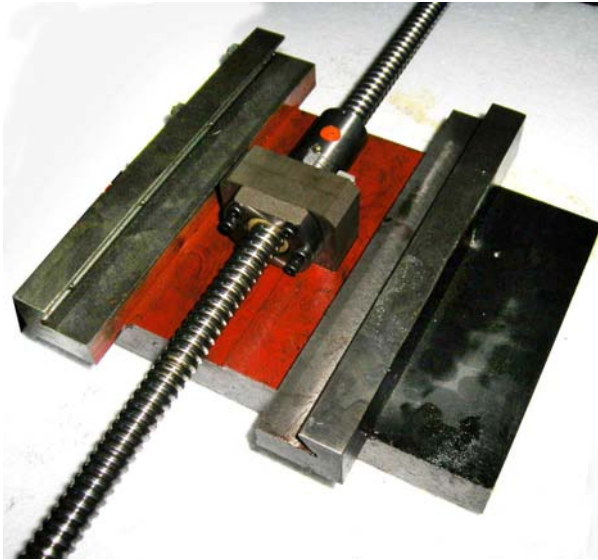
Please confirm two hole for installing 3D arm. detailed info please check our picture And the diameter of hole is 9mm . you can use M10 to do it .

Fourth step:



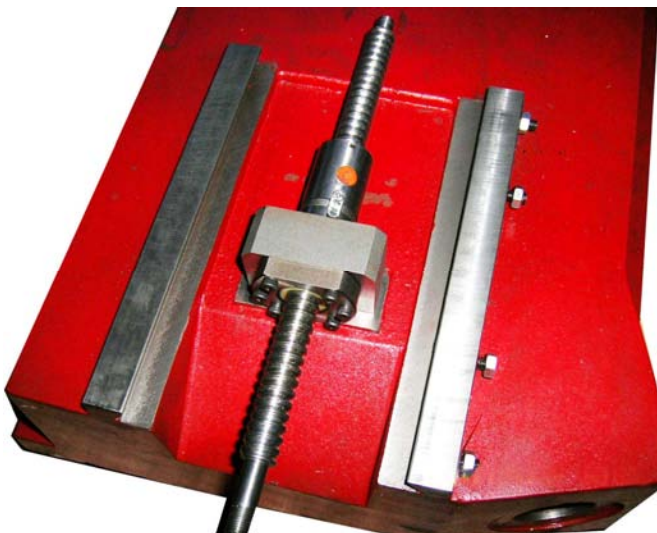
Please confirm the four hole for install control box. and the detailed place of hole that according to thickness of Z axis 34 stepper motor support plate. The thickness of support plate is 22mm. so we need move upgrade 22mm on the basis of original x3 base.(our position:22mm ).

Fifth step:



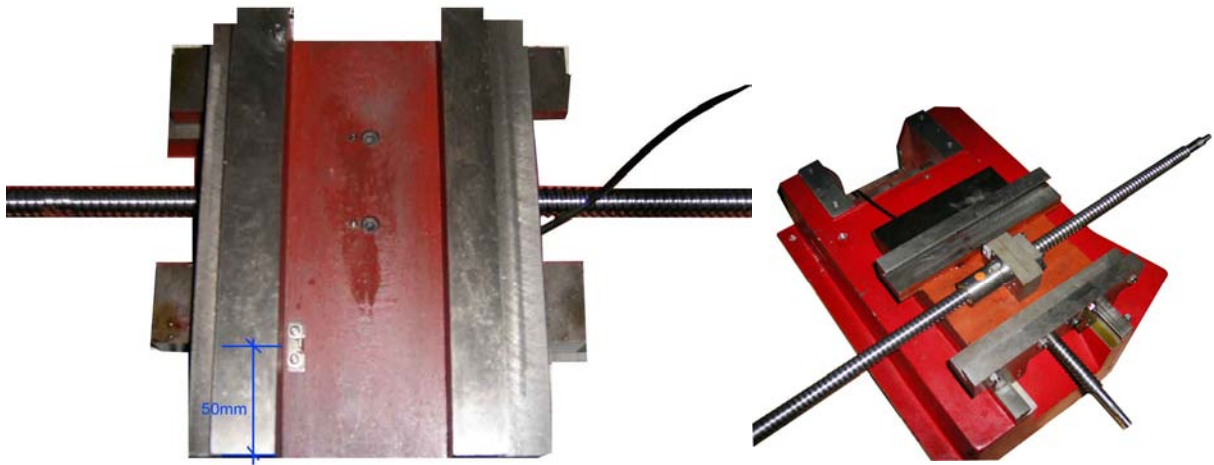
Install portrait ballscrew nut and X axis ballscrew. You need do two holes for install taper pin to toreinforce the portrait ballscrew nut.

Sixth step:

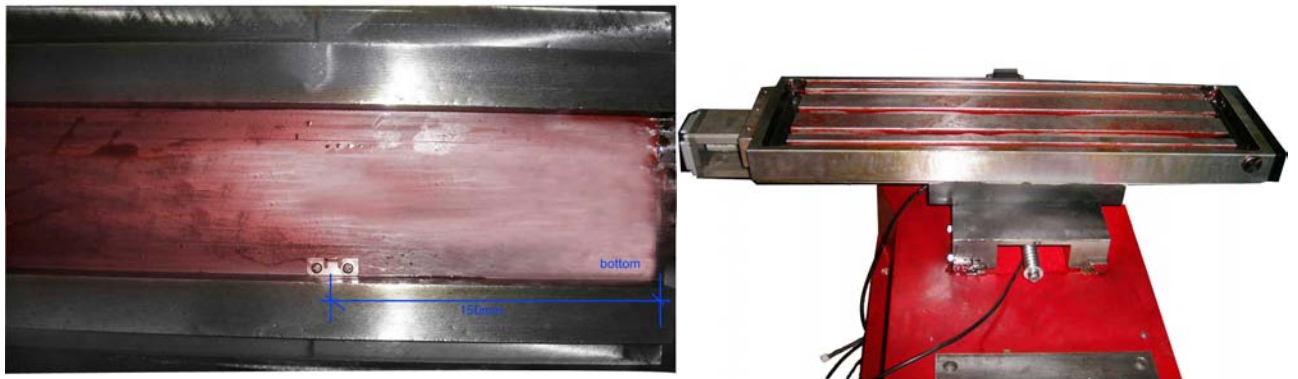


Install Y axis ballscrew and limit switch. It is installed by base of Base.

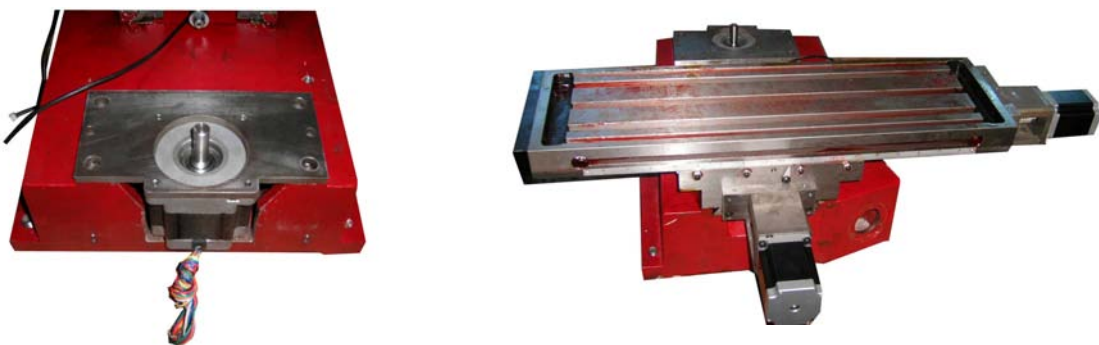
Seventh step:



Install iron sheet of Y axis limit switch(our position:50mm)after Install saddle following limit switch of X axis .  
Eighth step:



Install work table after install iron sheet of X axis limit switch.(our position:150mm distance portrait ballscrew bearing seat) .  
Ninth step:



Install stepper motor mount of X, Y axis .and Z axis motor support plate.following install stepper motor.  
Tenth step:



Install the verticality lead rail with spindle box.  
Eleventh step:



Install the iron sheet of Z axis limit switch(our position:170mm).then confirm a hole for installation Z axis limit switch and install the Z axis ballscrew and.notice:you need adjust the position until the lubricate is good when you install the Z axis.

Twelfth step:



Install the gas springs and link the back cover to verticality.then link all wire.

Thirteenth step:



Link our cnc box to back cover.(we also give you detailed info on the cnc box.) ok, you have succeed in installing our cnc X3.