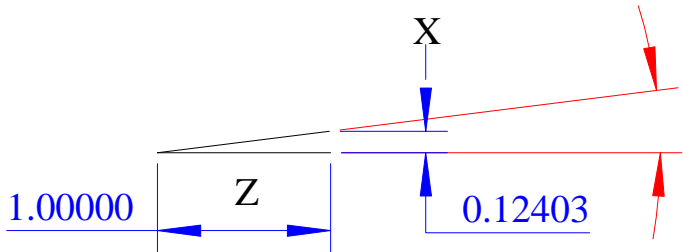


D1 TAPER ANGLE & DIMENSIONS

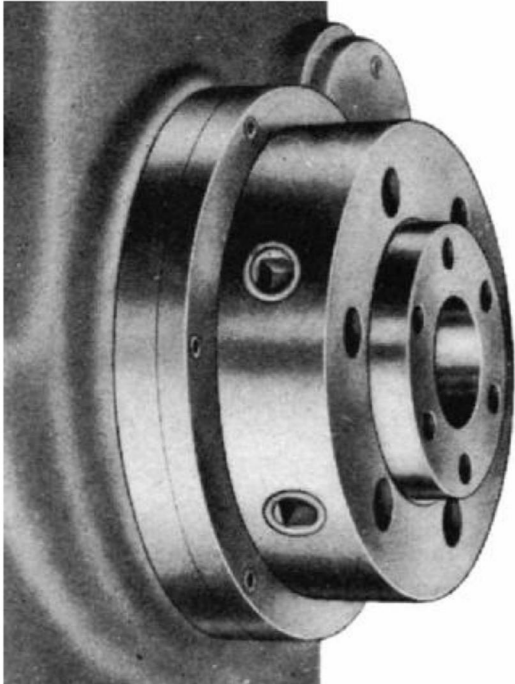
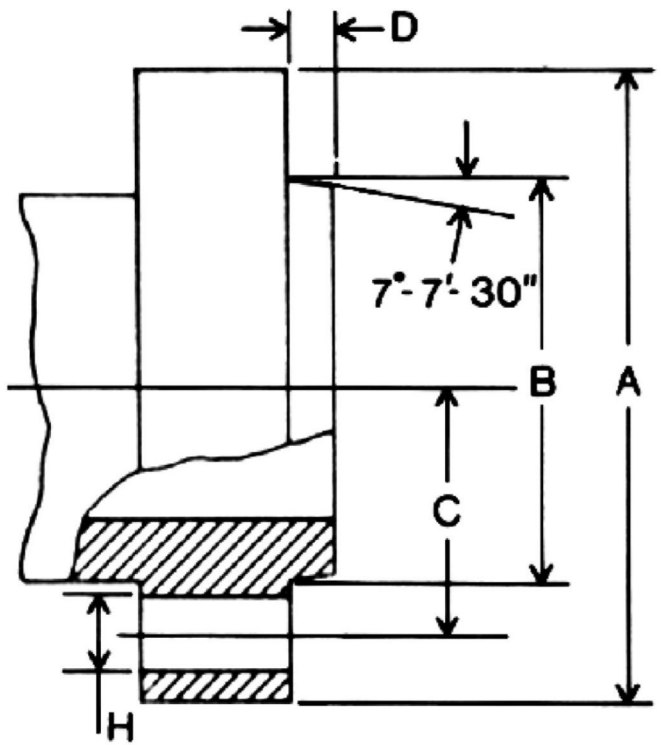
D1 TAPER ANGLE = 7° 7' 30"
 7 minutes = 7 * 0.01667 = 0.11669 Degrees
 30 seconds = 30 * 0.00027 = 0.00810 Degrees
 7° 7' 30" = 7.12479°

7.12479°



- 0.10000 = 0.01240
- 0.15000 = 0.01861
- 0.20000 = 0.02481
- 0.25000 = 0.03101
- 0.30000 = 0.03721
- 0.35000 = 0.04341
- 0.40000 = 0.04961
- 1.00000 = 0.12403

Z : X



American Short Taper with Cam-lock Fitting Type D1

SPINDLE NOSE SIZE			3"	4"	5"	6"	8"	11"	15"
Outside diameter	A	in.	3.625	4.625	5.750	7.125	8.875	11.750	15.875
		mm.	92.08	117.48	146.05	180.98	225.43	298.45	403.23
Max. taper diameter	B	in.	2.1250	2.5005	3.2505	4.1880	5.50075	7.75075	11.2510
		mm.	53.975	63.513	82.563	106.375	139.719	196.869	285.775
P.C.R. stud holes	C	in.	1.391	1.625	2.063	2.625	3.375	4.625	6.500
		mm.	35.32	41.28	52.39	66.68	85.73	117.48	165.10
Spigot height	D	in.	.44	.44	.50	.56	.63	.69	.75
		mm.	11.1	11.1	12.7	14.3	15.9	17.5	19.1
Stud hole diameter	H	in.	.5937	.6562	.78125	.90625	1.03125	1.21875	1.40625
		mm.	15.081	16.669	19.844	23.019	26.194	30.956	35.719